

## THE RESERVE

Tornada's Marsh is one of the last inland wetland areas in Portugal's Western Region. As such, it is a much valued wildlife sanctuary.

"Tornada's Marsh Local Nature Reserve" was officially created in 2009, and was integrated into the National Network of Protected Areas shortly after. The Municipality of Caldas da Rainha is in charge of its management.

The creation of the Reserve put in motion an innovative local level conservation project, that thrives on the cooperation between several actors: Central Administration (ICNF), Local Administration (Municipality of Caldas da Rainha and Parish Union of Tornada and Salir do Porto) and Environmental NGOs (PATO and GEOTA).



The Reserve maintains a wide range of activities in areas which include: birdwatching, nature workshops, courses and environmental education sessions.

These activities are undertaken within the Reserve's grounds, making use of the facilities provided by the Tornada's Marsh Ecological and Educational Centre.



## TORNADA'S MARSH LOCAL NATURE RESERVE

A Natural Oasis

### HOW TO ARRIVE



Câmara Municipal das Caldas da Rainha  
Praça 25 de Abril 2500-110 Caldas da Rainha  
262 240 000  
geral@cm-caldas-rainha.pt  
reserva.natural-pt@cm-caldas-rainha.pt

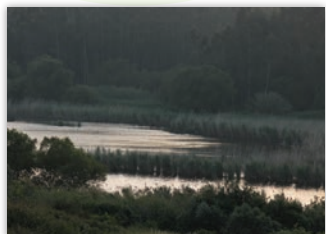
Centro Ecológico Educativo do Paul de Tornada  
Rua do Paul Nº12, Tornada 2500-315 Caldas da Rainha  
262 881 790 | 96 986 0659  
ceept.geota@gmail.com | associacaopato@gmail.com





## THE MARSH

Tornada's Marsh is a paludal environment composed by a continuously flooded central span, which is divided by a main ditch and limited by two additional drainage ditches. The surrounding lands are prone to flooding in times of increased rainfall. Its total area spans approximately 45 ha.



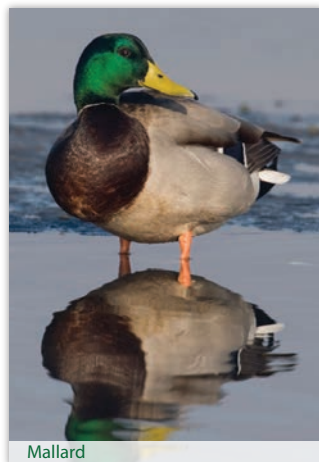
The transitional situation between an aquatic and a land environment that exists in marshes provides them with valuable characteristics, namely a vast biodiversity. Therefore, marshes are considered important genetic reserves and privileged habitats for plant and animal life.



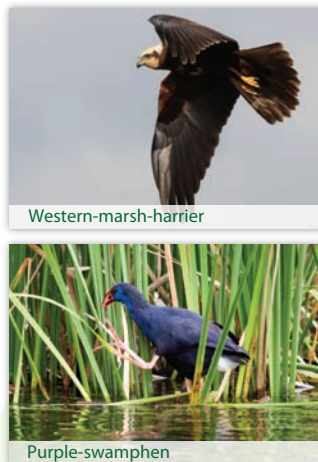
The Marsh has been classified as a "Permanent Fresh water Marsh" by the Ramsar Convention on Wetlands, due to its specificities as an habitat and its recognized value for nature conservation.

## BIRDS

Birds are the predominant group among the Marsh's wildlife, with more than one hundred species currently inventoried. A significant part of them reside continuously within the Reserve:



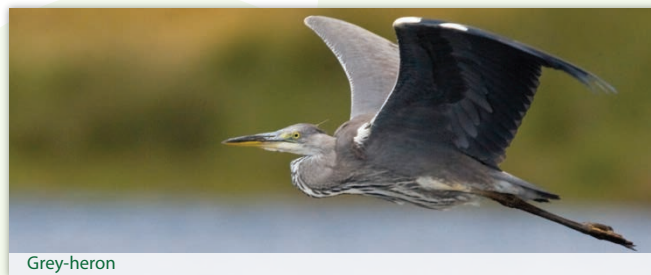
Mallard



Western-marsh-harrier

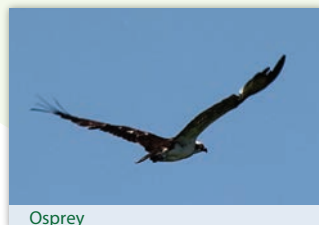


Purple-swamphen

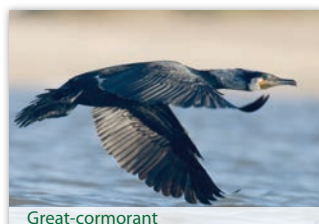


Grey-heron

This habitat is also of great importance for various migratory species which use it as a food source, shelter and breeding ground:



Osprey



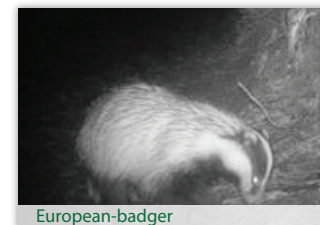
Great-cormorant



Purple-heron

## DIVERSE WILDLIFE

The presence of 18 species of mammals has been registered in the Marsh. Among them is the European-otter, chosen as the reserve's symbol. These species are hard to spot, but their presence is verified through tracks and excrements.

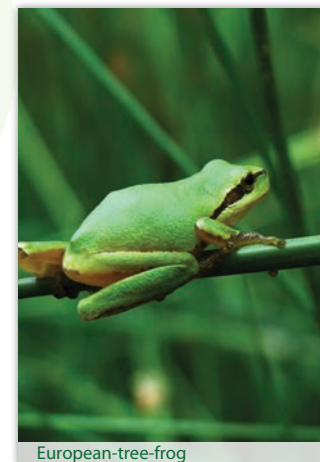


European-badger



Red-fox

Several species of reptiles and amphibians can also be found within the Marsh, including some of great importance for conservation purposes:



European-tree-frog



Iberian-emerald-lizard



European-pond-turtle

There is also a great abundance of invertebrates, of types characteristic to riparian environments.

